



# Unveil The Unseen

Your Vision + AI Precision

We are an OEM company specializing in solutions that produce intelligent insights through video analytics.

[www.starinco.com](http://www.starinco.com)



## Who we are

5+

Years in International Market

13+

Countries Served

100+

Implemented Projects

## Industries we cater



Manufacturing



Logistics



Smart City



Steel

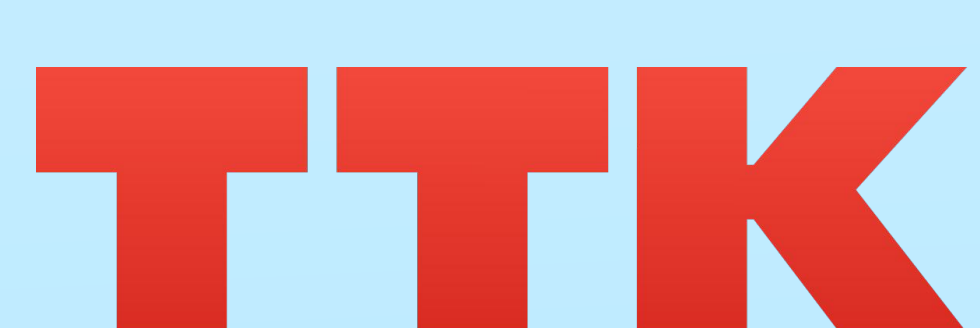


Mining



Energy

## Our clients & partners





# What we do



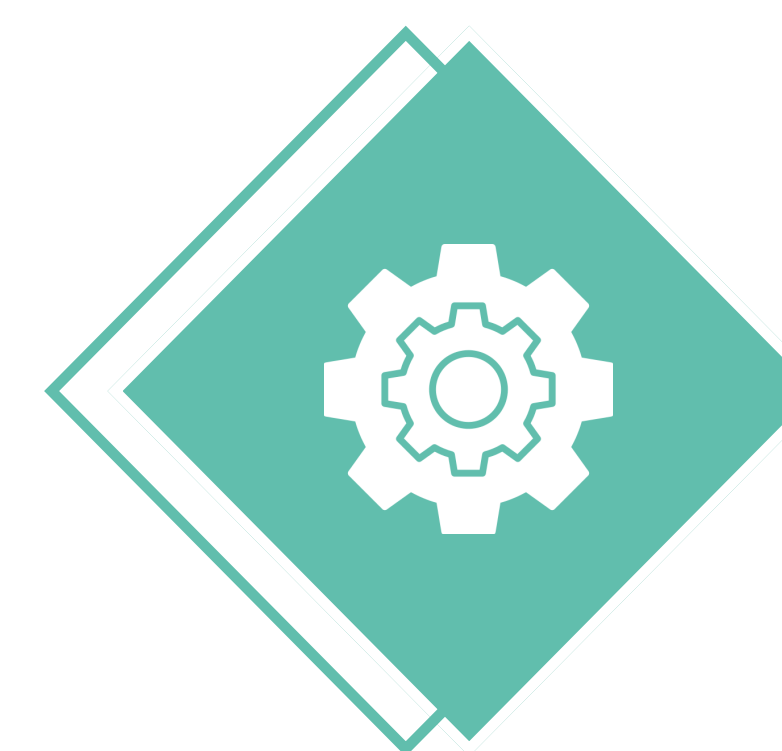
## AI-Powered Multi-Modal Analytics

We develop cutting-edge AI systems, computer vision, biometric identification, IoT, and Industry 4.0 solutions for diverse industries.



## Productivity, Safety and Security Enhancements

We deploy autonomous performance monitoring, perimeter control, industrial safety and security solutions on prem, on cloud or on edge for our customers.

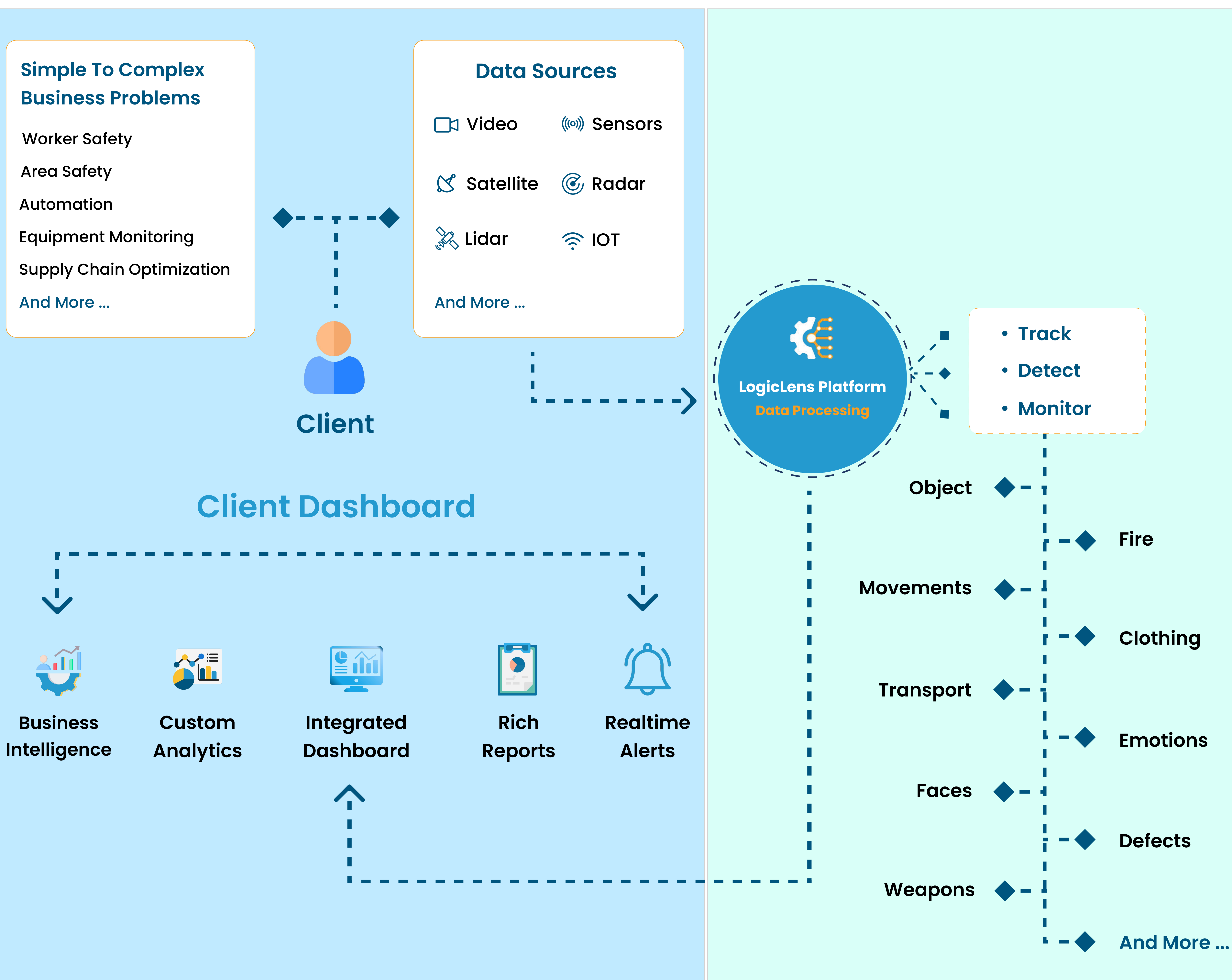


## Automation and Quality Improvement

We create Industry 4.0 solutions through automated production accounting, failure prediction, SOP adherence, and supply-chain optimization.

# How our platform works

We solve a diverse set of complex problems by ingesting data from various data sources into our **LogicLens Platform**.





# Business value proposition

- **Get a chance to look before you leap – We are easy to engage**

We provide free demos and analytics so you can test what you are getting before you commit.

- **Your expense matters to us – We are cost effective**

Our mature platform and accurate solutions are among the most cost-effective in the market.

- **Your legacy investments are protected – We care about your past**

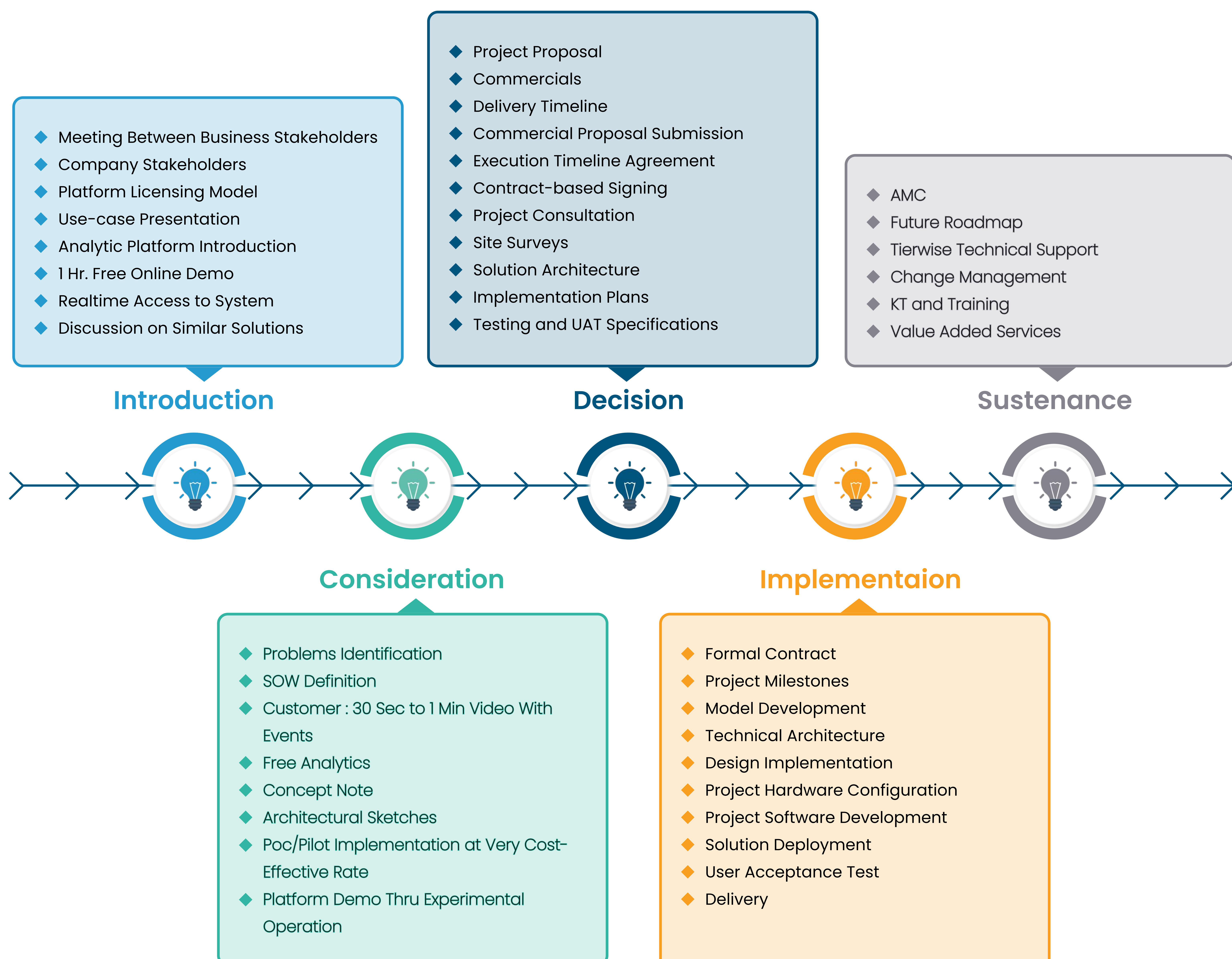
Our solutions start by integrating your existing cameras, controllers, sensors SCADA systems and line of business tools.

- **You can plan your solution in stages – We provide infinite extensibility**

Our flexible licensing and service consumption model allows building from simplest to most complex scenarios.

- **You are always in control – We provide flexible and secure deployment**

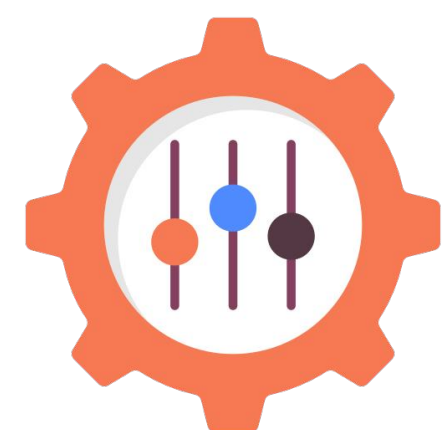
Our solutions can be rapidly deployed on premise, on cloud or on edge, with complete data security at your fingertips.





# Product technical features

## LogicLens Platform: Salient Technical Features



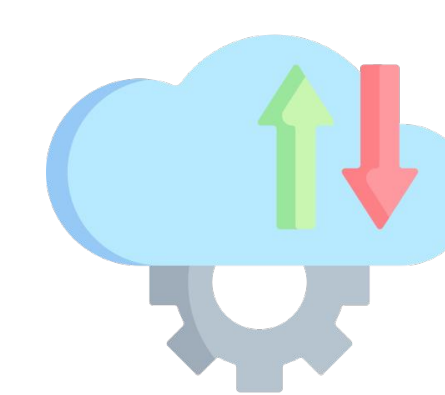
### Customizable Action Patterns

Users have the ability and flexibility to define action patterns tailored to specific scenarios.



### Security Features

Our platform comes with robust and state of the art security features such as, Encryption, Access Control, Role-based Workflows and Information Stream Distribution.



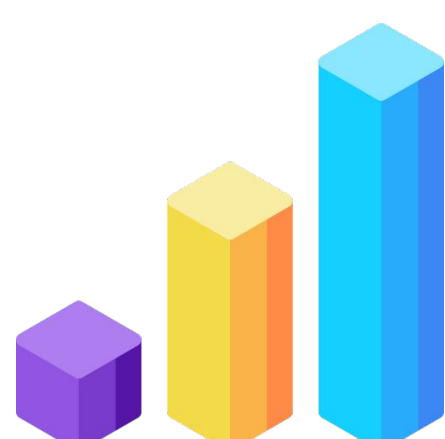
### API and SDK Support

Our platform offers comprehensive APIs and SDK support. This enables developers to extend functionality, customize integrations, and build bespoke solutions.



### Advanced Object Detection and Tracking

Our platform excels in identifying and tracking objects with unparalleled accuracy, ensuring real-time situational awareness and threat detection.



### Exceptional Scalability

Our platform supports both small-scale and enterprise-level projects through features like: Elastic resource allocation, Horizontal-Vertical Scaling, Distributed and Modular architecture.



### Transfer Learning Support

By leveraging pre-trained models and fine-tuning them on domain-specific data, our platform supports various transfer learning techniques, thereby achieving remarkable results.



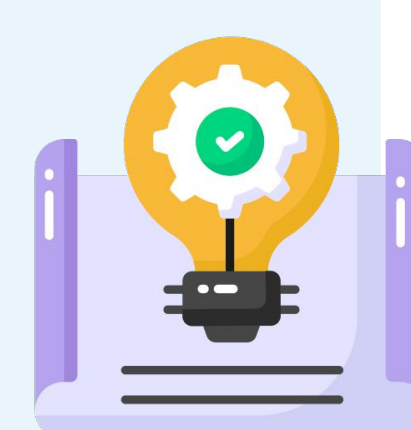
### Full Compliance with Industry Standards

Our platform adheres to compliance standards to ensure the highest level of security and regulatory compliance, including data protection regulations.



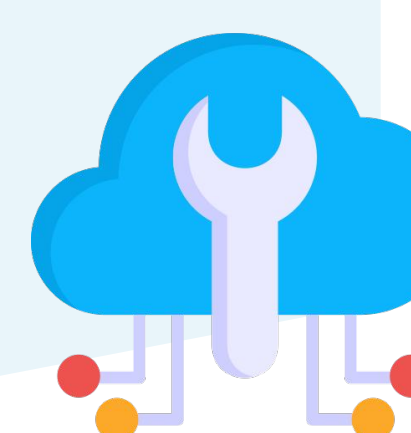
### Scalability and Integration

Our platform effortlessly integrates with various Sensors, Controllers, APCS, PACS, and ERP Systems.



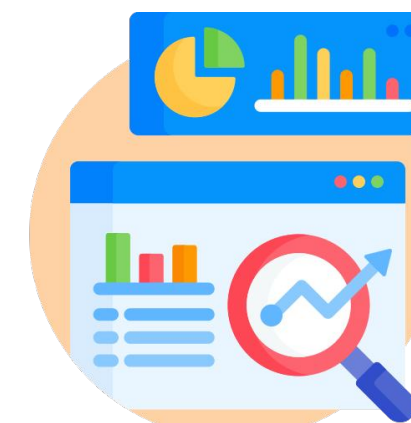
### Robust Workflow Automation

Our low-code platform facilitates workflow automation by leveraging intuitive drag-and-drop interfaces, visual workflow editors, and pre-built automation components.



### Cloud-based or Edge-based Deployment

Our platform offers flexible deployment options to suit the needs of any organization.



### Comprehensive Analytics and Reporting

Our platform provides detailed analytics scenarios and comprehensive reporting, enabling data-driven decision-making and continuous improvement.



### Data Source Management

By eliminating the need for complex programming, individuals can effortlessly connect video cameras, sensors, and customize scenarios to meet their unique requirements.



### Rich Library of Detectors

Our platform boasts a vast library of proprietary detectors, they are meticulously crafted to deliver exceptional accuracy and reliability, and tackles a diverse set of challenges with confidence.



### Support and Training

Extensive online knowledge base and documentation available for developers and system integrators. We also offer a comprehensive 72- hour training course for developers.





**STARINCO**

**Aerialogy Pvt. Ltd**

**Contact us at**

**Kolkata Office** : Zioks ,Godrej Genesis Building – Level 11 Block EP & GP,  
opp. to Syndicate Bank, Sector V, Kolkata, West Bengal 700091

**Bangalore Office** : WeWork, Hebbal, 9th floor, RMZ Latitude Commercial,  
Bellary Road Hebbal, Near Godrej Apt, Bangalore, KA 560024

**Email us at**

[info@starinco.com](mailto:info@starinco.com)

**Call us on**

9875670790

Partner with us

Work with us

Develop with us